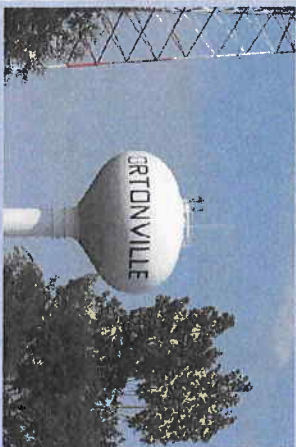


## Drinking Water Protection

All community water supply systems within Minnesota are required to create a formal wellhead protection plan to help protect drinking water resources. Information on the City of Ortonville's wellhead protection plan can be obtained at the City Office or at [www.ortonville.net](http://www.ortonville.net).

Further information on drinking water protection can be found on the Minnesota Department of Health and Minnesota Rural Water Association websites shown below.

[www.health.state.mn.us](http://www.health.state.mn.us)  
[www.mrwa.com](http://www.mrwa.com)



## City of Ortonville

315 Madison Avenue  
Ortonville, MN 56278

Phone: 320-839-3428

Fax: 320-839-2319

Email: [office@cityofortonville.org](mailto:office@cityofortonville.org)



**HELP PROTECT  
OUR DRINKING  
WATER**

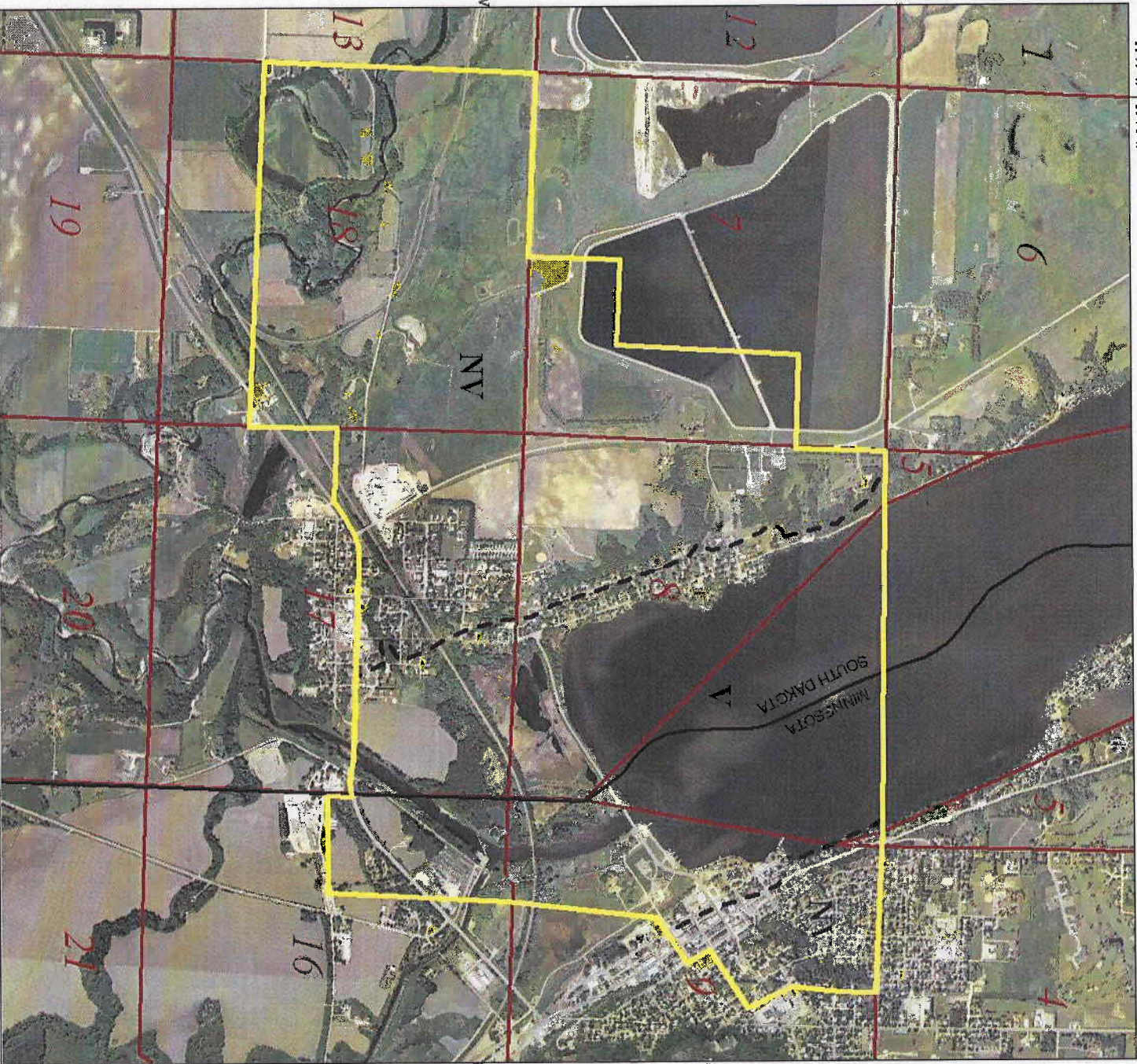
**Water - Essential  
for All Life**



Inside of this pamphlet is a map showing the City of Ortonville's Drinking Water Supply Management Area. The Drinking Water Supply Management Area is the area surrounding the City's public water supply wells that must be managed to help prevent contaminants from entering the public water supply source.



R 47 W R 46 W



# Ortonville

*Drinking Water Supply  
Management Area  
(DWSMA) MN-00445  
10 year Time of Travel*

 DWSMA  
 DWSMA Vulnerability Boundary

V = Vulnerable  
 NV = Not Vulnerable



Approved November 28, 2007

T 121 N

T 121 N

R 47 W R 46 W